

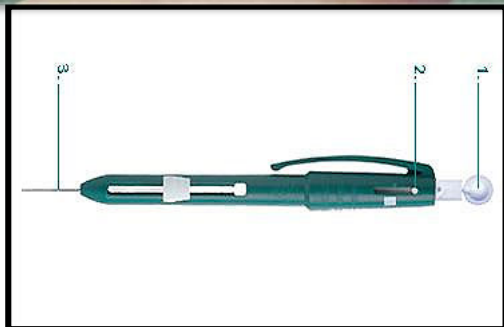
Medical devices used in the Diabetic Foot from Prevention to Advance Wound Care

Graham Bowen
Head of Podiatry

Challenges

- 135 diabetes related amputations per week in England
- Diabetic foot disease is a significant cost to the NHS : estimated at **£800 million** – *Marion Kerr 2012*
- Are the **right people** using the **right medical device** in managing Diabetic foot disease?
- Is there **timely access** to a dedicated Diabetic Foot / At Risk Foot team

Medical Devices used in establishing foot risk



Identifying Foot Risk



Acute &
High Risk
13%

Increased
27%

Low Risk
60%



Opportunities of the use of Medical devices



- Skin care
- Devices for off loading:
 - Orthotics / insoles
 - Bespoke footwear
 - Total Contact Casting
- Devices for self management



Opportunities of the use of Medical devices

- Instruments
- Dressings
- Off loading



Opportunities of the use of Medical devices

- Instruments
- Dressings
- Off Loading



Opportunities of the use of Medical devices



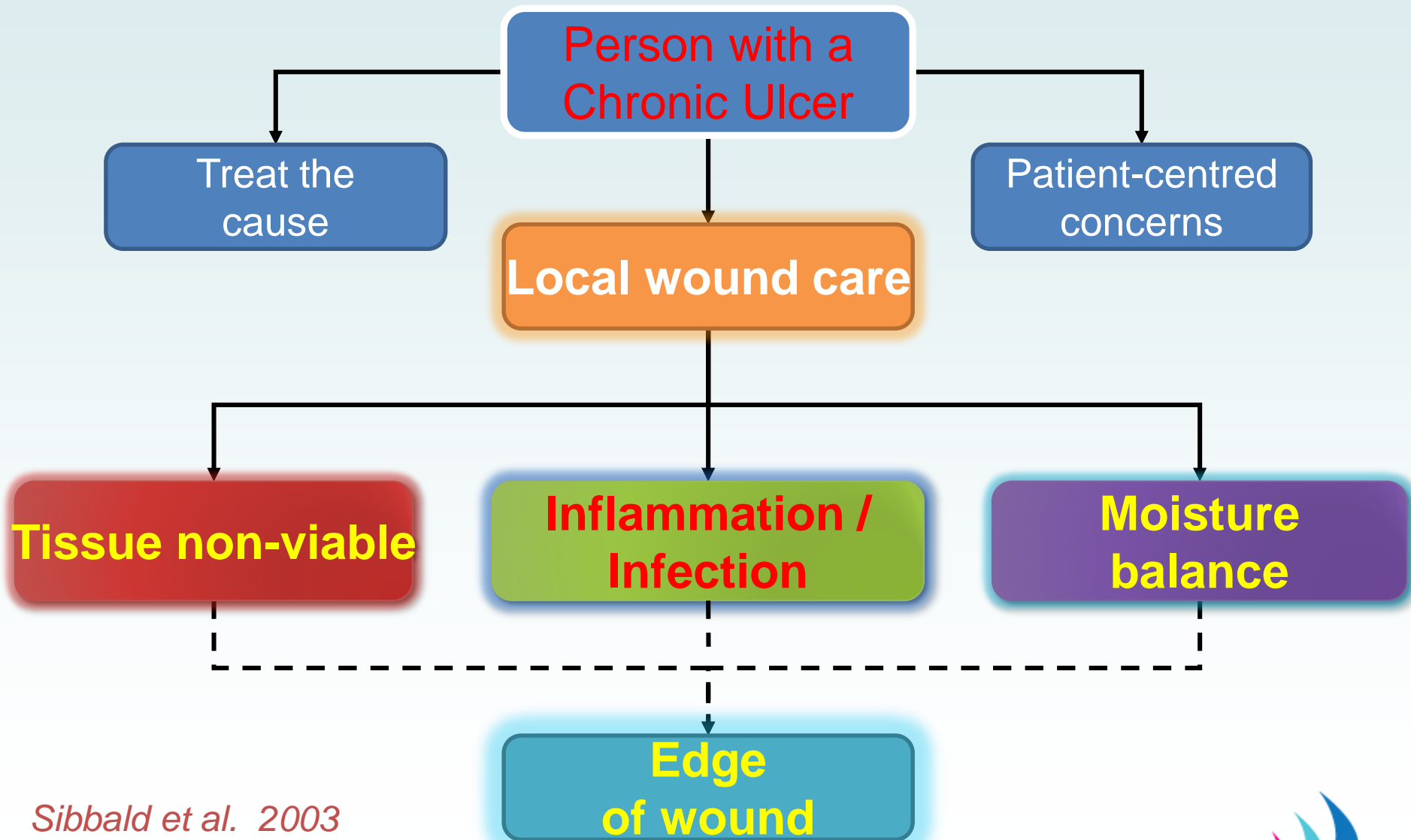
Which Medical device to use?



Challenges

- Time?
- Cost?
- Outcome?
- Patient expectation / concerns

Diabetic Foot Ulceration



Which Medical device to use?



- Dressings?
- Scalpel?
- Larvae?
- Versajet?

Which Medical device to use?



- Dressings?
- Scalpel?
- Larvae?
- Versajet?

Which Medical device to use?



- Dressings?
- Scalpel?
- Larvae?
- Versajet?

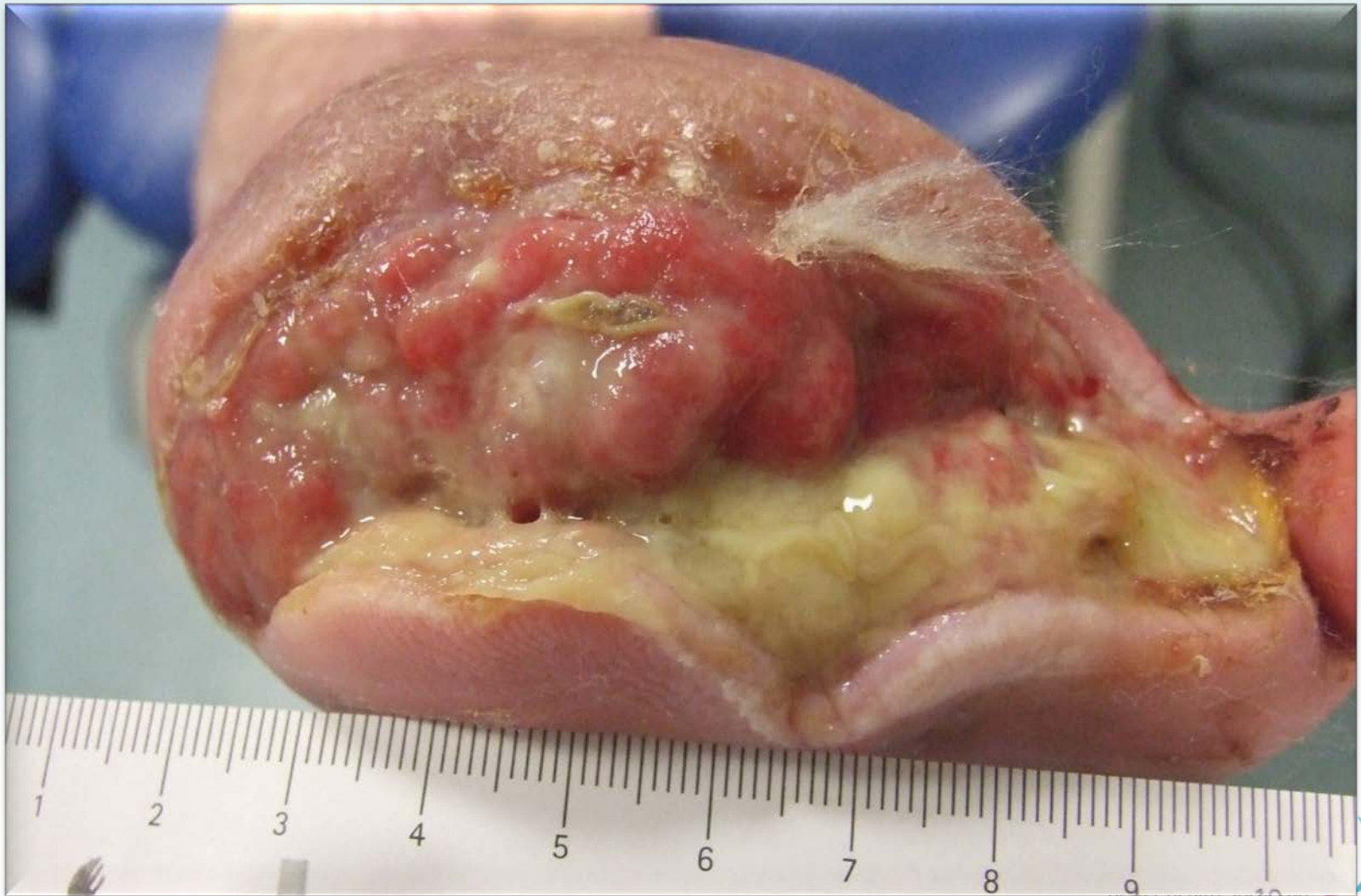


Which Medical device to use?

VERSAJET*
Hydrosurgery System



Which Medical device to use?



Which Medical device to use?



Negative Pressure Wound Therapy



Outcome – to keep the foot healed



- Re-ulceration
- Footwear
- Skin care
- Monitoring



TCC-EZ : INNOVATION



 **TCC-EZ**
TOTAL CONTACT CAST SYSTEM

Better health, local care 



Sept 16th, 2014
Pre-TCC EZ



Sept 16th, 2014
Post-debridement



October 7th, 2014





Nov 18th, 2014
Pre-TCC EZ



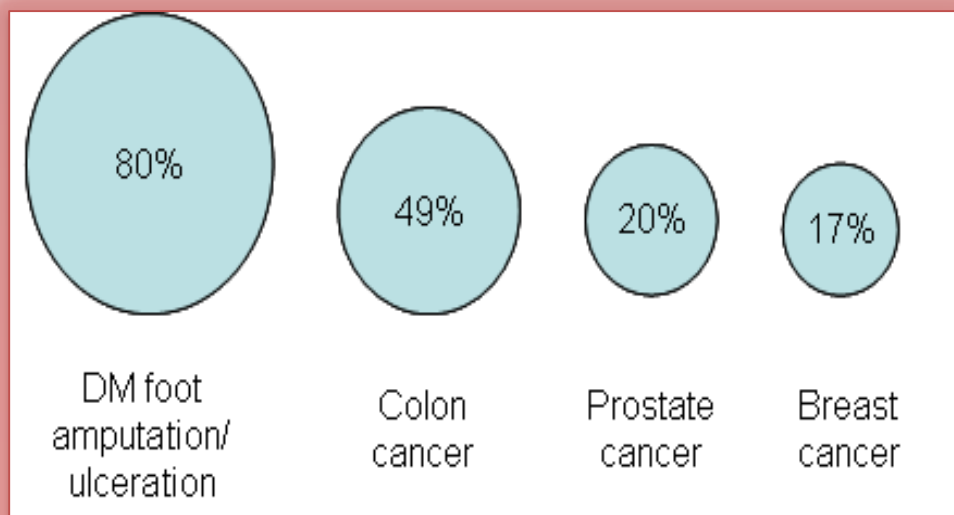
Dec 22nd, 2014



Jan 27th, 2015

135 diabetes related amputations per week in England

Average of 59,000 active foot ulcerations at any one time in England (Diabetes UK 2015)

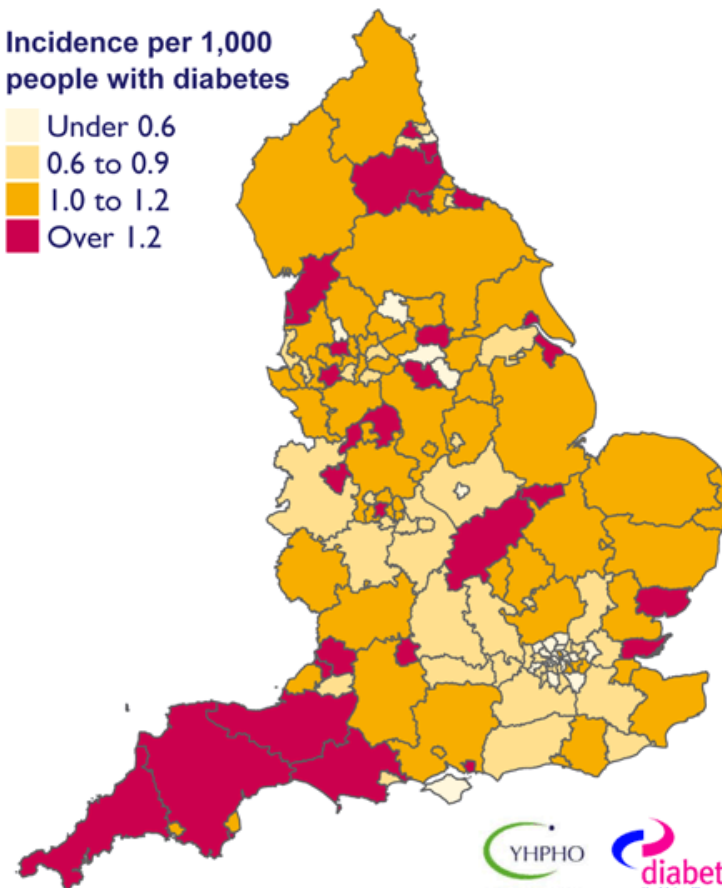
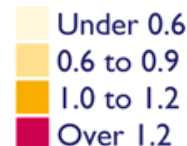


Comparative annual mortality rates 5 years post-incidence (Pattie, 2012)

Major amputation rates in people with diabetes

Sources: The Quality and Outcomes Framework (QOF) 2007/08 to 2009/10, Hospital Episode Statistics (HES) 2007/08 to 2009/10, The NHS Information Centre for health and social care

Incidence per 1,000 people with diabetes



Contains Ordnance Survey data ©
Crown copyright and database right 2012

YHPHO
YORKSHIRE & HUMBER
PUBLIC HEALTH OBSERVATORY

diabetes
Health Intelligence
A STRATEGIC PROGRAMME WITHIN YHPHO

Produced by YHPHO 2012

Local Amputation Rates

Major amputation / 1000 people with diabetes	2012	2013	2014	Trend
Fareham and Gosport CCG	1.31	1.6	1.5	↑
Portsmouth CCG	1.97	1.4	1.3	↓
South East Hampshire CCG	1.31	1.4	1.4	↑
Southampton CCG	1.11	1.1	1	↓
West Hampshire CCG	1.31	1.1	0.9	↓
England	1.01	0.9	0.9	

Colour coding

Red - worse than England

Amber - similar to England

Green - better than England

Minor amputation / 1000 people with diabetes	2012	2013	2014	Trend
Fareham and Gosport CCG	2.46	3.4	3.6	↑
Portsmouth CCG	3.24	2.9	2.9	↓
South East Hampshire CCG	2.46	2.3	2.7	↑
Southampton CCG	2.83	2.8	3.2	↑
West Hampshire CCG	2.46	2.2	2.1	↓
England	1.66	1.7	1.7	

Summary

- Prevention is key in diabetic foot disease
- Keeping the foot intact will prevent amputations
- Using medical devices can resolving ulceration quickly
- Off-Loading is an area for improvement
- Medical devices are widely used in the management of Diabetic foot
- Medical devices can range form inexpensive to expensive however the clinical outcomes are significant when the right medical device is used

Thank you!



Any Questions?